



# Journey Home

## One Year Oneness Programme

Sep	<p><b>Retreat 1</b>  <b>Releasing Personal Conditioning</b>          Aug 31<sup>st</sup>, 5pm - Sep 2<sup>nd</sup> 3pm 2007          Incl. individual session          Springhead Trust , Shaftesbury</p>		
Oct		<p>Telephone session          October 29<sup>th</sup>, 2007</p>	<p>Long Distance Deeksha          Oct. 11<sup>th</sup>, New moon</p>
Nov.			<p>Long Distance Deeksha          Nov 9<sup>th</sup>, New moon</p>
Dec	<p><b>Retreat 2</b>  <b>The Truth Behind the Mind</b>          Nov. 30<sup>th</sup>, 5pm- Dec. 2<sup>nd</sup>, 3pm, 2007          Springhead Trust , Shaftesbury</p>		
Jan		<p>Telephone session          January 29<sup>th</sup>, 2008</p>	<p>Long Distance Deeksha          Jan 8<sup>th</sup>, New moon</p>
Feb			<p>Long Distance Deeksha          Jan 22<sup>nd</sup>, Full moon</p>
Feb	<p><b>Retreat 3</b>  <b>Inner and Outer Relations</b>          Feb. 1<sup>st</sup>, 5pm - Feb. 3<sup>rd</sup>, 3pm 2008          Springhead Trust , Shaftesbury</p>		
Mar		<p>Telephone session          March 31<sup>st</sup>, 2008</p>	<p>Long Distance Deeksha          Feb. 21, Full moon</p>
April			<p>Long Distance Deeksha          April, 6<sup>th</sup>, New moon</p>
May	<p><b>Retreat 4</b>  <b>In Love With Above</b>          May 1<sup>st</sup> - 4<sup>th</sup> 2008          Incl. Individual session          Court Hill Centre Wantage</p>		
June		<p>Telephone session          June 11<sup>th</sup>, 2008</p>	<p>Long Distance Deeksha          May 20, Full moon</p>
July			<p>Long Distance Deeksha          June 18<sup>th</sup>, Full moon</p>
July			<p>Long Distance Deeksha          July 3<sup>rd</sup>, New moon</p>
Aug	<p><b>Retreat 5</b>  <b>Being One</b>          July 18-20<sup>th</sup> 2008, Full moon          Springhead Trust , Shaftesbury</p>	<p>Telephone session          July 28<sup>th</sup>, 2008</p>	
			<p>Long Distance Deeksha          August 16<sup>th</sup>, Full moon</p>

# Journey Home

## One Year Oneness Programme



### The Benefits of a Longer Programme

Cecil and Bruhn have been working with longer programmes for 8 years now. Since Deeksha has come into the toolbox they have experienced fantastic changes with the participants over time. The development is still a process but it is like watching one of these trick movies where a flower blossoms in 5 seconds. The veils disappear – the light emerges - it is visible for the physical eye as well as on the energetic plane. Lifetimes of development taking place within months.



### The Benefits of Working in a Comitted Group

The 12 months programme is for a group of 12 comitted beings. It is amazing to see how the members of the groups support and challenge each in a profound way in these development processes. Every member brings certain aspects to the group to make it whole. In some of the retreats we will also open up for extra participants that will bring and receive new gifts.

### The Benefits of Heart to Heart Connection

If you have tried to light a log fire then you know that is almost impossible to light one individual log. But if put it next to a log that is already on fire it starts to burn intensely. Being connected with a Oneness facilitator who is in the oneness state you will start to feel your inner light. The transmission that happens between hearts beyond time and space is perhaps the most transformative factor in play in spiritual development processes.



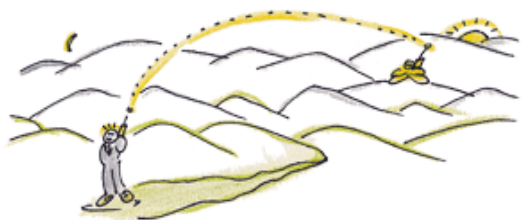


### **The Benefits of Individual Sessions**

Many of the blockages that cover our light are hidden in the unconscious mind, When we work in individual sessions Cecil and Bruhn can see these blockages and guide you to discover them yourself. In the light of awareness everything is transformed. It happens through spiritual coaching, prayer, healing and deeksha - thereby clearing the way for unconditional freedom.

### **The Benefits of Retreats**

Being on retreats is like putting your ego into a dissolvent fluid. The higher vibrations of energy resonates with your higher self and your true nature emerges from underneath the veils of conditioning and the old ancient collective mind. Several of the retreats are taking place on powerplaces placed on energy lines like the Michael and Mary manifesting heaven on earth. – within and without. The venues are not booked at this point in time but will be on the website very soon.



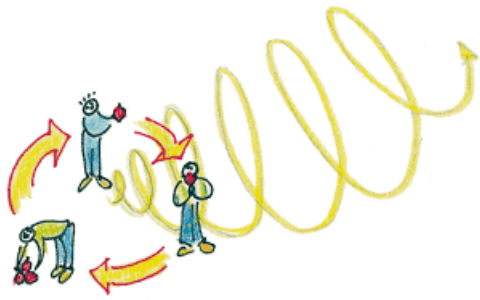
### **The benefits of Telephone Sessions**

Between the retreats Cecil and Bruhn will follow and guide your process through telephone sessions which are always finalized with a deeksha. The intention of the sessions is to help you with specific questions and challenges in your physical as well as well as your spiritual life. They also deepen the connection between you and the oneness facilitators on both these planes.

### **The Benefits of Long Distance Deekshas**

Between every retreat we will also have Long Distance Deekshas taking place on auspicious days - full moon and new moon. It is amazing to feel the effect of the deeksha energy when a comitted group is tuning in on the same time. Every deeksha flows to the individual as powerfully as when we are physically together. The intent is of course to catalyse the group process and the individual process even more.





### **The Benefits of Oneness Tools**

Joining the programme you will receive different tools like

- energy work exercises
- chakra dhyana – guided meditation
- yoga programme and much more

They all aim at catalysing your process and have proven effective for many people.

The tools are optional and you can put them into practise in your own way. There is no dogma -. only full freedom. Full freedom is the goal and the path.

### **The benefits of a Group Website**

Our communication platform will be a Yahoo Groups site. A very simple web-community-tool where we can

- see photos and contact information of all members
- access a library of tools, exercises and articles
- see the Group calendar
- access forum to share experiences and questions/answers

You will get a very clear and simple demonstration about how it works. Even people without computer skills can find out :o)



### **The Oneness Facilitators**

Cecil and Bruhn received the Oneness state in 2004. Since then they have shared the gift of enlightenment with many people in England and Denmark. Their work is based in the “Now” working with no manuscripts other than the flow of inspiration and the dynamics in the group. You will among other things experience oneness teachings, guided meditations, practical exercises, storytelling, voluntary yoga, healing sessions and of course Deekshas.

### **Costs, further info and signing up**

The tuition for the programme is £900 and includes retreats, individual sessions, telephone sessions, long distance Deekshas, tools, written guidelines and organisation. Cost of food, transportation and accommodation in the retreats is not included.

Signing up there will be a non refundable deposit of £500. The rest is paid with £100 in each of the first four retreats. If you are prevented from participating you can hand over the deposit to a new participant before the first retreat. All other costs are paid from retreat to retreat.



Further info about the programme, venues, costs etc. you can see on this site which will be continuously updated.

Please sign up with [info@onenesscenter.org](mailto:info@onenesscenter.org) where you can also direct any questions you might have. There is a maximum of 12 people in the group.

